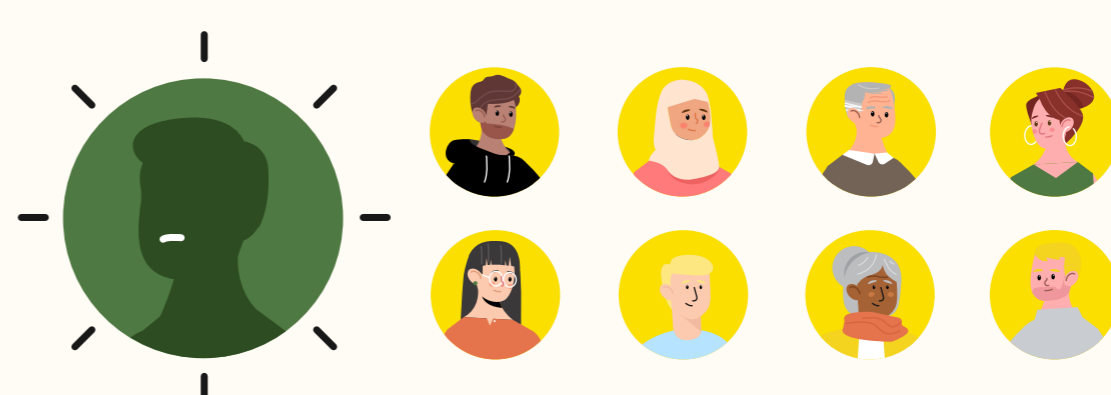


A GLOBAL PROBLEM



1/3 of all food produced goes to waste

931 million tonnes



1 IN 9 people do not have enough to eat

That's more than **828** million people

FOOD WASTE FEEDS CLIMATE CHANGE



10% of global greenhouse gas emissions are caused by wasted food.



Food waste in landfill releases **methane**, a greenhouse gas

28x more potent than CO₂

WASTING FOOD WASTES EVERYTHING

WATER



LAND



ENERGY



MONEY



Wasting food wastes all the precious resources it takes to produce food.

FOOD WASTE IN AUSTRALIA



7.6 million tonnes of food is wasted every year

Costing **\$36.6** billion

SUPERMARKETS



MANUFACTURERS



FARMS



HOMES



TRANSPORTATION

RESTAURANTS

Food gets wasted across the supply chain

2.5 million tonnes comes from our homes

BE PART OF THE SOLUTION!



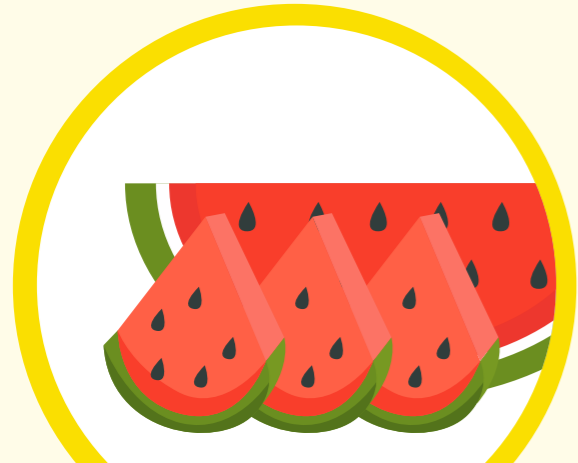
Reducing your food waste at home is the most effective way to take climate action.

WATERMELON NEEDS USING



Simply Use It Up!

Regularly check to see what needs eating and Use It Up.



SAVE FOOD



SAVE MONEY



SAVE THE PLANET